

LOUA® LOUA® LOUA® LOUA®
乐远索具 乐远索具 乐远索具 乐远索具
www.cnloua.com www.cnloua.com www.cnloua.com www.cnloua.com

LOUA® LOUA® LOUA® LOUA®
乐远索具 乐远索具 乐远索具 乐远索具
www.cnloua.com www.cnloua.com www.cnloua.com www.cnloua.com

LOUA® LOUA® LOUA® LOUA®
乐远索具 乐远索具 乐远索具 乐远索具
www.cnloua.com www.cnloua.com www.cnloua.com www.cnloua.com

LOUA® LOUA® LOUA® LOUA®
乐远索具 乐远索具 乐远索具 乐远索具
www.cnloua.com www.cnloua.com www.cnloua.com www.cnloua.com

LOUA® LOUA® LOUA® LOUA®
乐远索具 乐远索具 乐远索具 乐远索具
www.cnloua.com www.cnloua.com www.cnloua.com www.cnloua.com

LOUA® LOUA® LOUA® LOUA®
乐远索具 乐远索具 乐远索具 乐远索具
www.cnloua.com www.cnloua.com www.cnloua.com www.cnloua.com

LOUA® LOUA® LOUA® LOUA®
乐远索具 乐远索具 乐远索具 乐远索具
www.cnloua.com www.cnloua.com www.cnloua.com www.cnloua.com



乐远索具
www.cnloua.com

灵活 扎实 确保安全
Efficiency, Quality, Ensure safety!



灵活 扎实 确保安全
Efficiency, Quality, Ensure safety!

南京乐远索具有限公司
LOUA SLING CO.,LTD

LOUA® LOUA® LOUA® LOUA®

公司简介 COMPANY PROFILE

乐远索具

南京乐远索具有限公司致力于一直为用户提供安全、耐用的带索具产品，基于16年从事捆绑带，吊装带，拖车带，货物网的研究、生产以及国内外销售经验和技术的，我们为用户在货物吊装，货物运输固定方面提供了应有的安全保障。公司现有江苏南京和无锡两个生产基地共2万平方，产品90%出口欧洲，北美和澳大利亚地区，是全球重要的捆绑带和吊索具生产供应商之一。产品范围有：货运重型捆绑带、通用型棘轮捆绑带、扣式捆绑带、厢式车专用捆绑带及配件、轿车运输捆绑带、集装箱货物打包带、扁平吊装带、圆形吊装带，各类吊货网、货物固定网，高空安全防护网，拖车带，运动走扁带等，所有产品都执行欧美同等标准或高于欧美标准。数年来，我们不断引进国外先进产品，并开发新产品以满足不断升级的市场需求。

欢迎各界朋友交流、研究、指导、合作！

Get your best manufacturing companion who is able to 100% support your supply chain with full range, top quality straps for cargo lifting and lashing! LOUA SLING CO.,LTD is committed to providing our clients high quality custom lifting and lashing straps. Our product range include: webbing materials for lifting & lashing and various purpose, webbing sling, round sling, ratchet cargo straps, buckle lashing straps, winch straps, car lashing straps, container cargo straps, Cargo nets, towing straps etc., All of our products are made comply to European, North American, Australia, South American standards. High quality products, dedicated customer service, and innovation in developing new products is our core value. In the past decade, we were happy to set up business relationship with customers in 40+ countries who are in many different applications such as trading, logistics, shipping, iron&steel, construction, fishing, mining, military, outdoor sports and more.

Welcome to contact us for what you are expecting!



灵活 扎实 确保安全

Efficiency, Quality, Ensure safety!

乐远索具 乐远索具 乐远索具 乐远索具
www.cnloua.com www.cnloua.com www.cnloua.com www.cnloua.com

LOUA® LOUA® LOUA® LOUA®

LOUA® 乐远索具

乐远索具生产流程图



1-采用100%高强涤纶丝为原料
也可以按要求织其他材料织带
Made of 100% high-strength polyester yarn
Also be able to weave other yarn such as Nylon, WHWMPPE



6-使用高精度的电脑缝纫机缝制
Using high-precision computerized sewing machines for sewing



2-整齐有序的织带车间
Neat and orderly webbing workshop



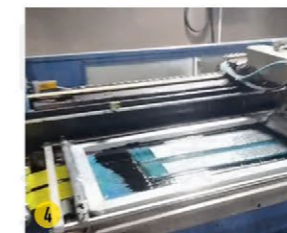
7-圆筒吊装带穿纱机工作中
Round sling threading machine at work



3-将织带染成要求的颜色
Dye the webbing into the required color



8-批次产品按相关标准进行破断测试
Batch products are subjected to breaking tests according to relevant standards.



4-按要求在织带上连续印字
Continuous printing on the webbing as required



9-包装贴唛完毕待出货
Packaging and labeling completed, ready for shipment



5-按相关的制作长度要求裁剪织带
Cut webbing according to relevant production length on request



10-集装箱装运
Finished goods loaded in container

www.cnloua.com

www.cnloua.com

www.cnloua.com

www.cnloua.com

LOUA®

LOUA®

LOUA®

LOUA®
www.cnloua.com

乐远索具
www.cnloua.com

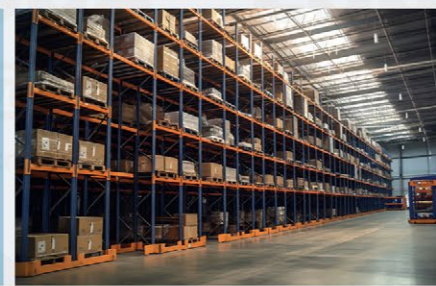
乐远索具
www.cnloua.com

乐远索具
www.cnloua.com

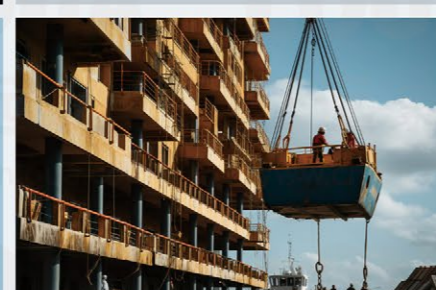
乐远索具
www.cnloua.com



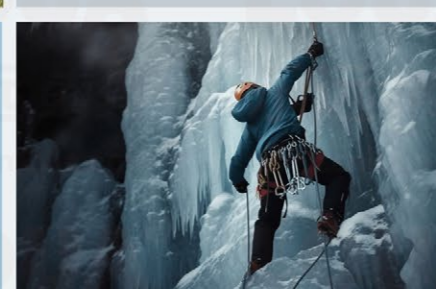
物流运输
Cargo transportation



海洋工程
Offshore



军需物资
Military materials



赋安全能量于

.....

We supply SAFETY for

LOUA®

目录 CONTENTS

A	货物捆绑带 Cargo straps.....	06-13
B	专用捆绑带 Specialty straps.....	14-15
C	吊装带 Lifting straps.....	16-22
D	扁带网 Cargo nets for various purposes	23
E	拖车带、绳 Towing strap/ropes.....	24-25
F	运动走扁带 Slackline	26
G	高空安全产品 Height safety products	27
H	军用系列 Military series	28
I	织带保护 Webbing protector	29
J	织带净带 Webbing materials.....	30-31
K	金属配件 Hardware	32-43



定制样式 Customized manufacturing



标签印字 Branding on Label

标签系为货物捆绑带、吊装带产品所必备，其上有印产品品牌、强度、生产日期、生产厂家等信息，也可在其中印制客户名称。印制LOGO需要客户提供JPG、PNG、BMP、PDF等适合格式的图标。

Labels are necessary for cargo lashing straps and lifting straps. They have information such as product brand, strength, production date, manufacturer, etc. printed on them. The customer's name can also be printed on them. To print LOGO, customers need to provide icons in suitable formats such as JPG, PNG, BMP, PDF, etc.



织带印字 Branding on webbing

无论是用于捆绑还是起重的织带上都可按要求批量印制产品强度，客户公司名，电话，LOGO，网址等标识或信息，视织带颜色（底色）印黑色，白色，蓝色，或者多种彩色。带子印字需要按要求来确认起订数量、费用，具体需求请联系我们！

Whether it is used for lashing or lifting, product strength, customer company name, phone number, LOGO, website and other logos or information can be printed on webbing in batches as required. Depending on the color (background color) of the ribbon, black, white, blue, Or multiple colors. For webbing printing, you need to confirm the minimum order quantity and cost according to the requirements. Please contact us for specific needs!



金属配件刻字 Branding on hardware

可以在所需的金属配件（如捆绑用的收紧器，连接件及吊装用的索具等）上标记上客户名，或者相关的LOGO等品牌信息，制作方式有模具冲压、激光上色等，具体需求请联系我们。

The required hardware (such as ratchet for lashing, rigging for lifting, etc.) can be marked with the customer's name, or related LOGO and other brand information. The branding methods include mold stamping, laser coloring, etc., please contact us for specific needs.



包装印字 Branding on carton

批量订单外包装可选择纸箱，或者托盘吨袋等，外包装可批量印制客户LOGO等标识或信息。

For bulk orders, the outer packaging can be cartons, pallet bags, etc. The outer packaging can be printed with customer LOGO and other logos or information in batches.



捆绑带收紧器类型 Types of the buckle



棘轮式
Ratchet



压扣式
cambuckle



反转扣式
overcenter buckle

织带类型 Types of webbing



我们的织带大多选用AA级高强涤纶丝织造而成，涤纶具有强度高、稳定性强、耐老化、抗紫外线等有点，是生产捆绑带，吊装带的高性价比材料。同时我们也可以按照使用场景使用尼龙、高分子、芳纶等高性能纱线来生产。具体请咨询我们！

Most of our webbings are woven from AA-grade high-strength polyester yarns. Polyester has the advantages of high strength, strong stability, aging resistance, and UV resistance. It is a cost-effective material for the production of lashing straps and lifting straps. At the same time, we can also use high-performance yarns such as nylon, polymer, and aramid to produce according to the usage scenario. Please consult us for details!

捆绑带长度和强度表示方法:

	两件式捆绑带 Two parts types	环形捆绑带 Endless type
长度 length	<p>使用长度</p> <p>两件式捆绑带标示有效使用长度为钩内侧到钩内侧</p> <p>The effective length marked on the two-parts lashing straps means from the inside of the hook to the inside of the hook.</p>	<p>使用长度</p> <p>环形长度标示长度为周长，也可以按使用长度=1/2织带总长来标示</p> <p>The length of the endless type is marked as the circumference, or it can also be marked as the length of use = 1/2 the total length of the webbing.</p>
强度 Strength	<p>两件式直拉破断强度为5吨时，同款环形捆绑带破断强度系数为：5X2=10吨</p> <p>When the straight-pull breaking strength is 5 tons for two parts types straps, the breaking strength of the same type of endless lashing straps is: 5X2=10tons</p> <p>*备注：捆绑带工作强度/最大破断强度=1/2 (*Note: Working strength/breaking strength =1/2)</p>	
用法 Usage	<p>两件式多用于货物运输固定，两头固定，中间收紧；环形捆绑带多用于货物打捆</p> <p>The two-parts type straps is mostly used for cargo transportation securement. It is fixed at both ends and tightened in the middle; the endless types straps is mostly used for cargo bundling.</p>	

棘轮式捆绑带-宽: 50MM Ratchet lashing straps- Width:50mm



两头式 2parts type 环形 Endless type

织带材料: 100% 高强涤纶
金属材料: 高碳钢 / 不锈钢
缝纫材料: 100% 高强涤纶
安全系数: 2: 1
生产标准: 欧标 EN12195-2, 美标 WSTDA 等
使用范围: 重型货物捆绑 (适用大部分货运场景)
Webbing materials: 100% Polyester
Metal materials: High Carbon steel/stainless
Sewing materials: 100% polyester
Safety factor: 2:1
Production standard: EN12195-2, WSTDA, etc
Use scope: cargo secure (suitable for most of the transportation scene)



产品结构 Product layout	编号 Type Code	宽度MM Width	工作强度KG Working strength	破断强度KG Breaking Strength	长度 Length	织带颜色 Webbing Color
两头式 2parts type	DR50	50	1000	2000	定制 On requested	定制 On requested
	DR50	50	1500	3000		
	DR50	50	2500	5000		
	DR50	50	3000	6000		
环形 Endless type	ER50	50	2000	4000		
	ER50	50	3000	6000		
	ER50	50	5000	10000		
	ER50	50	6000	12000		

备注: 美标宽度INCH, 长度为FT, 强度单位为LBS, 按美国及其他英制单位地区标准生产 Note: The American standard width unit is INCH, the length is FT, and the strength unit is LBS. It is produced according to the standards of the United States and other regions.

可选连接件 Alternative fittings

双排钩 Double J hooks	长双排钩带锁 Long double J hook with latch	爪钩 Claw hook	单排钩 Single J hook	D形环 Welding D ring	三角环 Welded delta ring	三角环锻钩 Traingle forged hook
平板钩 Flat hook with latch	平板扭钩 Flat twisted hook with latch	美标板钩 US standard flat hook	E形扣 E fitting for track	旋转钩 Swivel J hook	锚板+螺杆 Anchor plate with screw	如您需要的未展示, 请联系我们 If what you need is not displayed, please contact us

可选收紧器 Alternative ratchet buckle

高精密长柄 Long handle precise	经典长柄 Classic long handle	中柄 Medium Arm Handle	短直柄 short straight handle	加长柄 Extra long handle	倒齿 Ergo ratchet	加强6吨 Double Safety Lock 6ton
轻型2吨 Light duty 2ton	六角头型 wrench driver(no handle)	不锈钢长柄 Stainless 5ton	不锈钢轻型 stainless 2ton	收紧器带钩 Ratchet with installed fitting	固定式紧带器 Bolt winch	如您需要的未展示, 请联系我们 If what you need is not displayed, please contact us

备注: 收紧器把手类型及表面处理方式有多种选择, 具体请按需求咨询我们。
NOTE: There are many options for ratchet handle types and surface treatments. Please contact us for further needs.

50MM宽-5吨棘轮收紧器推荐: Recommended type of 50mm-5ton ratchet

1、全热处理组件, 强度保证; 2- 双片式齿轮, 有效缓冲卡片冲击力, 减少磨损, 延长使用寿命; 3- 加强齿轮挡片, 使用长久无损伤, 整体受强力冲击依然能稳定锁紧; 4- 支架加强筋, 耐摔, 长久使用不变形; 5- 手指纹把手, 握感舒适。

1, All parts heating treatment, ensure breaking strength; 2, Double-piece gear effectively buffer the impact of chocks, reduces wear and extends service life; 3, Reinforced gear block, no damage after long-term use, and the whole can still be locked stably even under strong impact; 4, The bracket has reinforced ribs, which is resistant to falling and will not deform after long-term use; 5, Fingerprint handle, comfortable to hold.



织带工艺类型说明 Webbing technology and types			
平纹 Plain weaving	斜纹工艺 Twill weaving	反光 High-Viz and Reflective	表面特殊处理 Special treatment
最常见也最普及的类型 The most popular type	相比于平纹来讲更耐磨 Compare to the plain weaving it get more abrasion resistant	可以在织带上做反光条, 也可以直接将反光线织在带子面 Be able to make the reflective materials(chips, pieces, etc) on webbing, or to weave the reflective yarn into webbing	根据需要在织带表面做PU涂层, 防火, 防污等涂层, 使织带在很大程度上有防割, 防火, 防污等需要的性能。 According to the request to do types of PU coating on the surface of webbing, such as anti-flaming, anti-fouling, so that the webbing get performance of anti-cutting, fire, anti-fouling and more.

常用两头型棘轮捆绑带 (现货: 3-15米) Recommended ratchet cargo lashing straps(3-15meters in stock)

3-15 米长带含双排钩:
8-40 条 / 箱
3-15meters long part with hook
8-40pcs/ctn



收紧器含双排钩:
24 个 / 箱, 32 箱 / 托
short part with ratchet and hook
24pcs/ctn, 32ctns/pallets



棘轮式捆绑带-宽: 75-100MM Ratchet lashing straps- Width:75-100mm



两头式 2parts type 环形 Endless type

织带材料: 100% 高强涤纶
金属材料: 高碳钢 / 不锈钢
缝纫材料: 100% 高强涤纶
安全系数: 2: 1
生产标准: 欧标 EN12195-2, 美标 WSTDA 等
使用范围: 超重型货物, 如重型机械, 飞机等
Webbing materials: 100% Polyester
Metal materials: High Carbon steel/stainless
Sewing materials: 100% polyester
Safety factor: 2:1
Production standard: EN12195-2, WSTDA, etc
Use scope: heavy-duty cargo secure, such as heavy machine, air plane, yacht, etc.



产品结构	编号	宽度MM	工作强度KG	破断强度KG	长度	织带颜色
Product layout	Type Code	Width	Working strength	Breaking Strength	Length	Webbing Color
两头式 2parts type 	DR75	75	5000	10000	定制 On requested	定制 On requested
	DRF75	75	10000	20000		
	DR100	100	5000	10000		
环形 Endless type 	DE75	75	10000	20000		
	DE100	100	10000	20000		

备注: 美标宽度INCH, 长度为FT, 强度单位为LBS, 按美国及相关地区标准生产
Note: The American standard width unit is INCH, the length is FT, and the strength unit is LBS. It is produced according to the standards of the United States and other regions.

可适配连接件 Alternative fittings

双排钩 Double J hooks	爪钩 Claw hook	天鹅钩 C/W swan hook+keeper	三角环 Welded delta ring	可拆卸环 D ring with threads	可拆环+货钩 D ring with eye hook	三角环+货钩 Triangle forged hook
锻造三角环 Forged delta ring	美标板钩 US flat hook	直角板钩 Right angle flat hoo	美标链条钩 US chain hooks	象脚 Elephant foot	如您需要的未展示, 请联系我们 If what you need is not displayed, please contact us	

可适配棘轮 Alternative ratchet buckle

标准100MM Standard 100mm 10ton ratchet	标准75MM Standard 75mm 10ton ratchet	75MM短柄 Short handle 75mm 10ton ratchet	如您需要的未展示, 请联系我们 If what you need is not displayed, please contact us

备注: 收紧器把手类型及表面处理方式有多种选择, 具体请按需求咨询我们。
NOTE: There are many options for ratchet handle types and surface treatments. Please contact us for further needs.

棘轮式捆绑带-宽: 35-38MM Ratchet lashing straps-Width:35-38mm



两头式 2parts type 环形 Endless type

织带材料: 100% 高强涤纶
金属材料: 高碳钢 / 不锈钢
缝纫材料: 100% 高强涤纶
安全系数: 2: 1
生产标准: 欧标 EN12195-2, 美标 WSTDA 等
使用范围: 轻型货物捆绑固定。
Webbing materials: 100% Polyester
Metal materials: High Carbon steel/stainless
Sewing materials: 100% polyester
Safety factor: 2:1
Production standard: EN12195-2, WSTDA, etc
Use scope: Light-duty cargo secure.



产品结构	编号	宽度MM	工作强度KG	破断强度KG	长度	织带颜色
Product layout	Type Code	Width	Working strength	Breaking Strength	Length	Webbing Color
两头式 2parts type 	DR35	35	1000	2000	定制 On requested	定制 On requested
	DR38	38	1500	3000		
环形 Endless type 	ER35	35	2000	4000		
	E38	38	3000	6000		

备注: 美标宽度INCH, 长度为FT, 强度单位为LBS, 按美国及其他英制单位地区标准生产
Note: The American standard width unit is INCH, the length is FT, and the strength unit is LBS. It is produced according to the standards of the United States and other regions.

可选连接件 Alternative fittings

双排钩 Double J hook	双排钩带锁 Long double J hook with latch	单排钩 Single J hook	三角环 Welded delta ring	锻造钩带环 Triangle snap hook	轨道连接扣 Stud fitting for Track	平板钩 Flat hook with latch
平板钩 Twist flat hook with latch	旋转钩 Swivel hook for ratchet	单排钩带套管 Single J hook with tube	丁字钩带套管 J hook with tube	爪钩 Claw hook	如您需要的未展示, 请联系我们 If what you need is not displayed, please contact us	

可适配棘轮 Alternative ratchet buckle

3吨塑料柄 38mm-3ton standard	3吨直柄 3ton straight handle	3吨圆把手 3ton round plastic grip	3吨长柄 38mm-3ton long handle	3吨不锈钢 38mm-3ton stainless	2吨铁柄 38mm-2ton standard	2吨包胶黑 38mm-2ton rubber handle
2吨不锈钢 2ton stainless	32MM-1.5吨 32mm-1.5ton rubber handle	如您需要的未展示, 请联系我们 If what you need is not displayed, please contact us				

备注: 收紧器把手类型及表面处理方式有多种选择, 具体请按需求咨询我们。
NOTE: There are many options for ratchet handle types and surface treatments. Please contact us for further needs.

棘轮式捆绑带-宽: 25-28MM Ratchet lashing straps- Width:25-28mm



两头式 2parts type 环形 Endless type

两头式+环形式 (2parts type - endless type)

织带材料: 100% 高强涤纶
金属材料: 高碳钢 / 不锈钢
缝纫材料: 100% 高强涤纶
安全系数: 2: 1
生产标准: 欧标 EN12195-2, 美标 WSTDA 等
使用范围: 轻型货物捆绑固定。
Webbing materials: 100% Polyester
Metal materials: High Carbon steel/stainless
Sewing materials: 100% polyester
Safety factor: 2:1
Production standard: EN12195-2, WSTDA, etc
Use scope: Light-duty cargo secure.



产品结构	编号	宽度MM	工作强度KG	破断强度KG	长度	织带颜色
Product layout	Type Code	Width	Working strength	Breaking Strength	Length	Webbing Color
两头式 2parts type	DR25	25	400/500	800/1000	定制 On requested	定制 On requested
	DR28	28	750	1500		
环形 Endless type	ER25	25	800	1600	定制 On requested	定制 On requested
	ER28	28	1500	3000		

备注: 美标宽度INCH, 长度为FT, 强度单位为LBS, 按美国及其他英制单位地区标准生产 Note: The American standard width unit is INCH, the length is FT, and the strength unit is LBS. It is produced according to the standards of the United States and other regions.

可适配连接件 Alternative fittings

双排钩 Double J hooks	单排钩 Single J hook	双排扭钩 Twisted double J hook	板钩 Flat hook	板钩带锁 Flat hook with latch	平板钩带锁 Flat hook with latch	平板扭钩 twisted flat hook
锻造钩 Forged snap hook	锚板 Anchor plate	S钩 S hook	S钩带锁 S hook with latch	轨道连接扣 Stud fitting for track	如您需要的未展示, 请联系我们 If what you need is not displayed, please contact us	

可适配棘轮 Alternative ratchet buckle

25mm彩锌 25mm standard	25mm包胶黑 25mm with rubber handle	25mm宽把手 25mm wide handle	28mm-1.5吨 28mm 1.5ton straight handle	28mm宽把手 28mm with wide handle	28mm铁柄 28mm with steel handle	28mm包胶柄 28mm with rubber handle
25mm不锈钢 25mm stainless	28mm不锈钢 28mm stainless	如您需要的未展示, 请联系我们 If what you need is not displayed, please contact us				

备注: 收紧器把手类型及表面处理方式有多种选择, 具体请按需求咨询我们。
NOTE: There are many options for ratchet handle types and surface treatments. Please contact us for further needs.

压扣捆绑带: 宽25-35-50MM Cambuckle lashing straps- Width:25-35-50mm



两头式 2parts type 环形 Endless type

两头式+环形式 (2parts type - endless type)

织带材料: 100% 高强涤纶
金属材料: 压铸铝合金 / 不锈钢
缝纫材料: 100% 高强涤纶
安全系数: 2: 1
生产标准: 欧标 EN12195-2, 美标 WSTDA 等
使用范围: 小型货物捆绑固定。
Webbing materials: 100% Polyester
Metal materials: Zinc Alloy /stainless
Sewing materials: 100% polyester
Safety factor: 2:1
Production standard: EN12195-2, WSTDA, etc
Use scope: Small or Light-duty cargo secure.



产品结构	编号	宽度MM	工作强度KG	破断强度KG	长度	织带颜色
Product layout	Type Code	Width	Working strength	Breaking Strength	Length	Webbing Color
两头式 2parts type	DCB25	25	125	250	定制 On requested	定制 On requested
	DCB25-5	25	250	500		
	DCB35	35	450	900		
	DCB50	50	750	1500		
环形 Endless type	ECB25	25	250	500	定制 On requested	定制 On requested
	ECB25-4	25	500	1000		
	ECB35	35	900	1800		
	ECB50	50	1500	3000		

备注: 美标宽度INCH, 长度为FT, 强度单位为LBS, 按美国及其他英制单位地区标准生产 Note: The American standard width unit is INCH, the length is FT, and the strength unit is LBS. It is produced according to the standards of the United States and other regions.

可适配连接件 Alternative fittings

双排钩 Double J hooks	单排钩 Single J hook	板钩 Flat hook	板钩带锁 Flat hook with latch	平板钩带锁 Flat hook with latch	平板扭钩 twisted flat hook	三角环 Welded delta ring
锻造钩 Forged snap hook	锚板 Anchor plate	S钩 S hook	S钩带锁 S hook with latch	轨道连接扣 Stud fitting for track	轨道连接扣 Stud fitting for Track	如您需要的未展示, 请联系我们 If what you need is not displayed, please contact us

可选压扣 Alternative cambuckles

25mm-250kg	25MM-两头 25mm-double	25mm-400kg	25mm-600kg	35mm-600kg	35mm-800kg	35mm-900kg
40mm-1100KG	50mm-900KG	50mm-1100KG	50mm-1500KG	不锈钢 Stainless	如您需要的未展示, 请联系我们 If what you need is not displayed, please contact us	

备注: 收紧器把手类型及表面处理方式有多种选择, 具体请按需求咨询我们。
NOTE: There are many options for ratchet handle types and surface treatments. Please contact us for further needs.

反转扣捆绑带: 宽25-50MM

Overcenter lashing straps

Width:25-50mm



织带材料: 100% 高强涤纶
金属材料: 压铸铝合金 / 不锈钢
缝纫材料: 100% 高强涤纶
安全系数: 2: 1
生产标准: 欧标 EN12195-2, 美标 WSTDA 等
使用范围: 小型 / 轻型货物捆绑固定
Webbing materials: 100% Polyester
Metal materials: Zinc Alloy /stainless
Sewing materials: 100% polyester
Safety factor: 2:1
Production standard: EN12195-2, WSTDA, etc
Use scope: Small or Light-duty cargo secure



产品结构	编号	宽度MM	工作强度KG	破断强度KG	长度	织带颜色
Product layout	Type Code	Width	Working strength	Breaking Strength	Length	Webbing Color
两头式 2parts type 	DOB25	25	300	600	定制 On requested	定制 On requested
	DOB28	28	750	1500		
	DOB25	28	1000	2000		
	DOB45	45	1150	2300		
	DOB50	50	1000	2000		
环形 Endless type 	EOB25	25	300	600		
	EOB28	28	750	1500		
	EOB25	28	1000	2000		
	EOB45	45	1150	2300		
	EOB50	50	1000	2000		

备注: 美标宽度INCH, 长度为FT, 强度单位为LBS, 按美国及其他英制单位地区标准生产 Note: The American standard width unit is INCH, the length is FT, and the strength unit is LBS. It is produced according to the standards of the United States and other regions.

可适配连接件 Alternative fittings

S钩 S hook	S钩带锁 S hook with latch	双排钩 Double J hooks	单排钩 Single J hook	板钩 Flat hook	板钩带锁 Flat hook with latch	三角环 Welded delta ring
平板钩带锁 Flat hook with latch	平板扭钩 twisted flat hook	锻造钩 Forged snap hook	锚板 Anchor plate	轨道连接扣 Stud fitting for track	轨道连接扣 Stud fitting for track	如您需要的未展示, 请联系我们 If what you need is not displayed, please contact us

可选压扣 Alternative cambuckles

25mm-600kg	25mm-600kg	25mm-1500KG	28mm-1500KG	28mm-2000KG	45mm-2000KG	45mm-2000KG
45mm-2300KG	50mm-400kg	50mm-750kg	50mm-2000kg	不锈钢25mm Stainless25mm	不锈钢50mm Stainless50mm	如您需要的未展示, 请联系我们 If what you need is not displayed, please contact us

备注: 反转扣宽度、类型及表面处理方式有多种选择, 具体请按需求咨询我们。

NOTE: There are many options for the overcenter buckle width and surface treatments. Please contact us for further needs.

织带打包带和打包扣

One way lashing straps and buckles

织带材料: 100% 高强涤纶
金属材料: 锻造钢 / 焊接钢
生产标准: 欧标 EN12195-2, 美标 WSTDA 等
使用范围: 重物流运输打包
Webbing materials: 100% Polyester
Metal materials: forged steel/welded steel
Production standard: EN12195-2, WSTDA, etc
Use scope: cargo transport packing for container, flat rack, railcars or ships.



用于平板柜, 集装箱等运输装备中的货物固定, 也可以按要求设计生产集装箱货物内装捆绑系统

Use for cargo secure or packing in container, flat rack, railcars and other transportation equipment. we are also able to manufacture the container lashing system for cargo secure inside the containers space.

编号	织带宽度	破断强度	适配扣件宽度	单条长度	颜色+印字
Type Code	webbing Width	Breaking strength	Suitable Buckle width	Length per piece	Colour/Overprint
CDS28	28	4000KG	30	按要求 On requested	按要求 On requested
CDS35	35	3000KG	35		
CDS38	38	4000KG	40		
CDS504	50	4000KG	50		
CDS505	50	5000KG	50		
CDS506	50	6000KG	50		
CDS507	50	7000KG	50		

包装方式:

可打卷 100米 / 卷, 或者按一定米数装袋, 用多少剪多少

Packing way:

100M/roll, or pack in plastic bag with length on request (usually 200 meters), to be cut by the length in need.



连接扣Buckle

打包器Strapping tensioner

编号	内部宽度	破断强度
Type Code	Inner Width	Breaking strength(KG)
CDB30F	30	3000
CDB30R	30	5000
CDB35F	35	1500
CDB35R	35	2500
CDB40F	40	4000
CDB40R	40	6000
CDB50F	50	5000
CDB50R	50	7000
CDH50(钩)	50	5000
打包器	50	5000

整车捆绑带-公路运输 Vehicle transportation: Truck

1-清障车 Tow truck



2-轿运车 Large car carrier



3-单锚型-平板拖车 Lasso strap



整车在公路中可以用清障车及商品运输车托运，按照不同的装运设备适配不同类型的固定捆绑带及配件。

The vehicle can be transported on the highway by tow trucks and other large car carrier, different types of ratchet lashing straps and accessories are adapted to different shipping equipment.

编号 Type Code	宽度 Width	工作强度 Working strength	破断强度 Breaking Strength	长度 Length	颜色 Webbing Color
CLT38	38	1500	3000	3m	按要求
CLT50	50	2500	5000	3m	On requested

备注: 其他规格样式可按要求生产 Note: Other specifications and styles can be produced on request

可适配棘轮 Alternative ratchet buckle

高精密长柄 Long handle precise	经典长柄 Classic long handle	中柄 Medium Arm	短直柄 short straight handle	3吨塑柄 38mm-3ton standard	3吨直柄 3ton straight handle

如您需要的未展示, 请联系我们
If what you need is not displayed, please contact us

可适配连接件 Alternative fittings

双排钩 Double J hooks	平板扭钩 twisted flat hook	鸭舌钩 Flat snap hook with tube	内档旋转钩 Swivel hook for ratchet	单排钩带套管 Single J hook with tube	丁字钩带套管 J hook with tube	棘轮连接钩 Conversion snap hook	外档旋转钩 Swivel J hook

其他配件 Other Accessories

八字绑带 Dog-bone strap	橡胶钉板 Anti-slip rubber chip	大橡胶块 Anti-slip rubber	防滑胶条 75CM Anti-slip-rubber	织带防磨护套 Webbing protector

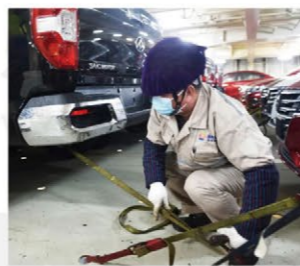
如您需要的未展示, 请联系我们
If what you need is not displayed, please contact us

整车捆绑带-海运滚装 Vehicle transportation: RO-RO ship or Ferry on SEA

织带材料: 100% 高强涤纶
金属材料: 高碳钢
缝纫材料: 100% 高强涤纶
安全系数: 2: 1
生产标准: 欧标 EN12195-2 等
Webbing materials: 100% Polyester
Metal materials: High Carbon steel
Sewing materials: 100% polyester
Safety factor: 2:1
Production standard: EN12195-2



编号 Type Code	宽度 Width	工作强度 Working strength	破断强度 Breaking Strength	长度 Length	颜色 Webbing Color
CLRR15	28	750	1500	2m	按要求
CLRR20	28	1000	2000	2m	On requested



可选扣件 Alternative buckle		末端件 Alternative fittings	
28mm-1500KG	28mm-2000KG	28mm-1500KG	28mm-2000KG

编号 Type Code	宽度 Width	工作强度 Working strength	破断强度 Breaking Strength	长度 Length	颜色 Webbing Color
CS25	28mm	1000KG	2000KG	0.6米/1.2米周长	按要求
CS50	50mm	2500KG	5000KG	1米/2米周长	On requested
TS75	75mm	5000KG	10000KG	1.5米/3米周长	

备注: 其他规格样式可按要求生产
Note: Other specifications and styles can be produced on request



连接带分为环形和双眼形，主要用于穿在车辆轮毂中，以方便连接捆绑带，防止金属物刮到新车轮毂造成损伤。
The car sling have endless and eye-eye types. They are mainly used to be worn in the vehicle wheel hub to facilitate the connection of the lashing straps and prevent metal objects from scratching the new wheel hub and causing damage.

更多领域专用捆绑器材.. /Further more..

扁平吊装带 Flat webbing sling



乐远起重吊带概况:

乐远起重吊带全部选用AA级聚酯涤纶工业长丝(PES),该材料具有强度高,耐磨性好,耐光性好等特点,经过成熟生产工艺织造,并在长年欧标、美标的生产工艺基础上进行改良,更耐磨,使用寿命更长。广泛应用于汽车、船舶、冶金、机械、军工、矿山、石油、化工、港口、电力、电子、运输、等等领域。
LOUA lifting slings are all made of AA-grade polyester polyester industrial yarn (PES). This material has the characteristics of high strength, good wear resistance, and good light resistance. It is woven by mature production technology and has been comply to European and American standards for many years. Improved on the basis of the standard production process, it is more wear-resistant and has a longer service life. LOUA webbing sling is widely used in automobiles, ships, metallurgy, machinery, military industry, mining, petroleum, chemical industry, ports, electric power, electronics, transportation, and other fields.

双眼扁平吊装带单层 Eye-Eye Flat webbing sling-Single ply

织带材料: 100% 高强涤纶
缝制材料: 100% 高强涤纶
安全系数: 6: 1, 7: 1, 8: 1
生产标准: 国标 JB/T8521, 欧标 EN1492-1, 美标 WSTDA 等, 澳洲标准: AS1353
使用范围: 多为随货走的“一次性”吊装
Webbing materials: 100% Polyester
Sewing materials: 100% Polyester
Safety factor: 6:1,7:1,8:1
Production standard: Chinese: JB/T8521, European:EN1492-1, USA:WSTDA, Australia:AS1353,etc
Use scope: Mainly “one-way”lifting in the processing of cargo transportation



编号 Type Code	强度 W.L.L.	颜色 Webbing color	近似宽度(MM)Approximate width			最小长度 (M) Mini.Length	最大长度 (M) Max.Length
			6:1	7:1	8:1		
WS1-0050	500KG		30	30	50	1.1	100
WS1-0100	1000KG		50	60	65	1.2	100
WS1-0150	1500KG		75	90	90	1.3	100
WS1-0200	2000KG		100	120	120	1.4	100
WS1-0250	2500KG		125	150	150	1.5	100
WS1-0300	3000KG		150	180	200	1.7	100
WS1-0400	4000KG		200	240	240	2.0	100
WS1-0500	5000KG		250	300		2.2	100

备注:其他规格样式可按要求生产
Note: Other specifications and styles can be produced on request

扁平双眼吊装带-双层 Eye-Eye Flat webbing sling-Double ply

织带材料: 100% 高强涤纶
缝制材料: 100% 高强涤纶
安全系数: 6: 1, 7: 1, 8: 1
生产标准: 国标 JB/T8521, 欧标 EN1492-1, 美标 WSTDA 等, 澳洲标准: AS1353
使用范围: 大多数吊装场景都适用
Webbing materials: 100% Polyester
Sewing materials: 100% Polyester
Safety factor: 6:1,7:1,8:1
Production standard: Chinese: JB/T8521, European:EN1492-1, USA:WSTDA, Australia:AS1353,etc
Use Scope: Mostly all of the lifting application



编号 Type Code	强度 W.L.L.	颜色 Webbing color	近似宽度(MM)Approximate width			最小长度 (M) Mini.Length	最大长度 (M) Max.Length
			6:1	7:1	8:1		
WS2-0100	1000KG		30	30	50	0.9	100
WS2-0200	2000KG		50	60	65	1.0	100
WS2-0300	3000KG		75	90	90	1.1	100
WS2-0400	4000KG		100	120	120	1.3	100
WS2-0500	5000KG		125	150	150	1.5	100
WS2-0600	6000KG		150	180	200	1.6	100
WS2-0800	8000KG		200	240	240	2.0	100
WS2-1000	10000KG		250	300	300	2.2	100
WS2-1200	12000KG		300	300	300	2.2	100

备注:其他规格样式可按要求生产
Note: Other specifications and styles can be produced on request

扁平双眼吊装带-四层 Eye-Eye Flat webbing sling-Multi ply

织带材料: 100% 高强涤纶
缝制材料: 100% 高强涤纶
安全系数: 6: 1, 7: 1, 8: 1
生产标准: 国标 JB/T8521, 欧标 EN1492-1, 美标 WSTDA 等, 澳洲标准: AS1353
使用范围: 缺点是偏硬, 通常用于较大的货物
Webbing materials: 100% Polyester
Sewing materials: 100% Polyester
Safety factor: 6:1,7:1,8:1
Production standard: Chinese: JB/T8521, European:EN1492-1, USA:WSTDA, Australia:AS1353,etc
Use scope: Multi ply webbing sling will be little stiff, so it mostly use for a bigger cargo



编号 Type Code	强度 W.L.L.	颜色 Webbing color	近似宽度(MM)Approximate width			最小长度 (M) Mini.Length	最大长度 (M) Max.Length
			6:1	7:1	8:1		
WS4-0100	2000KG		30	38	50	1.0	100
WS4-0200	4000KG		50	60	65	1.0	100
WS4-0300	6000KG		75	90	90	1.5	100
WS4-0400	8000KG		100	120	120	1.5	100
WS4-0500	10000KG		125	150	150	2.0	100
WS4-0600	12000KG		150	180	200	2.0	100
WS4-0800	16000KG		180	240	240	3.0	100
WS4-1000	20000KG		200	300	300	3.0	100
WS4-1200	24000KG		300	300	300	3.0	100

备注:其他规格样式可按要求生产
Note: Other specifications and styles can be produced on request

宽体吊装带

Wide-body webbing sling

织带材料: 100% 高强涤纶
 缝制材料: 100% 高强涤纶
 安全系数: 6: 1, 7: 1, 8: 1
 生产标准: 国标 JB/T8521, 欧标 EN1492-1, 美标 WSTDA 等, 澳洲标准: AS1353
 使用范围: 主要用于管道, 游艇等对表面保护要求较高的货物吊装。
 Webbing materials: 100% Polyester
 Sewing materials: 100% Polyester
 Safety factor: 6:1,7:1,8:1
 Production standard: Chinese: JB/T8521, European:EN1492-1, USA:WSTDA, Australia:AS1353.,etc
 Use scope: Mainly use for the goods like Oil pipe, yacht ,etc which are strictly requested to protect the surface of the goods.



编号 Type Code	强度 W.L.L.	颜色 Webbing color	近似宽度(MM)Approximate width			环眼长度 (MM) Eye-length	最小长度 (M) Mini.Length
			5:1	6:1	7:1		
WWS1-1600	16000KG		400	400	480	500	2.3
WWS1-2000	20000KG		500	500	600	550	2.4
WWS1-2400	24000KG		600	600	600	600	2.5
WWS2-3200	32000KG		400	400	480	650	2.6
WWS2-4000	40000KG		500	500	600	700	2.8
WWS2-4800	48000KG		600	600	600	700	3.0

备注: 其他规格样式可按要求生产
 Note: Other specifications and styles can be produced on request

吊装带缝连接件

Webbing sling sewn with Rigging

织带材料: 100% 高强涤纶
 缝制材料: 100% 高强涤纶
 安全系数: 6: 1, 7: 1, 8: 1
 生产标准: 国标 JB/T8521, 欧标 EN1492-1, 美标 WSTDA 等, 澳洲标准: AS1353
 Webbing materials: 100% Polyester
 Sewing materials: 100% Polyester
 Safety factor: 6:1,7:1,8:1
 Production standard: Chinese: JB/T8521, European: EN1492-1, USA:WSTDA, Australia: AS1353.,etc



编号 Type Code	强度 W.L.L.	颜色 Webbing color	近似宽度(MM)Approximate width			长度 (M) Length	末端配件 Rigging type
			6:1	7:1	8:1		
WS2FF-0100	1000KG		30	30	50	定制	按需求
WS2FF-0200	2000KG		50	60	65		
WS2FF-0300	3000KG		75	90	90		
WS2FF-0400	4000KG		100	120	120		
WS2FF-0500	5000KG		125	150	150		
WS2FF-0600	6000KG		150	180	200		
WS2FF-0800	8000KG		200	240	240		
WS2FF-1000	10000KG		250	300	300		
WS2FF-1200	12000KG		300	300	300		

备注: 吊装带规格可做2层及4层, 具体参数参见前面吊装带表格
 Note: The webbing part is able to be made of 2 or 4ply refer to the sheet in previous page.

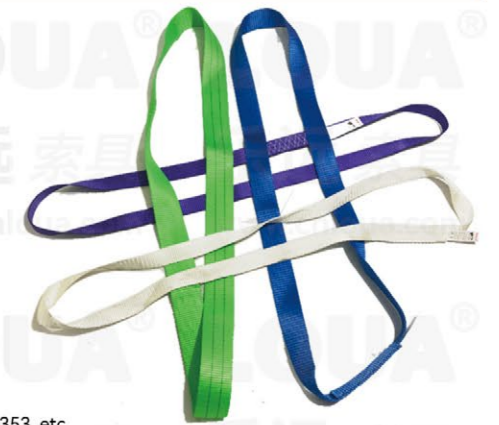
可适配连接件 Alternative fittings					
卸扣 Shackle	强力环 Master link	子母环 Master link Assembly	蝴蝶扣 Connecting link	D形环 D ring	货钩 Hooks

备注: 吊具连接件样式及强度按整体吊装需要适配, 详情请联系我们 Note:The rigging types is chosen on request, please contact us!

扁平环形吊装带-单层

Endless webbing sling single ply

织带材料: 100% 高强涤纶
 缝制材料: 100% 高强涤纶
 安全系数: 6: 1, 7: 1, 8: 1
 生产标准: 国标 JB/T8521, 欧标 EN1492-1, 美标 WSTDA 等, 澳洲标准: AS1353
 使用范围: 多为随货走的“一次性”吊装
 Webbing materials: 100% Polyester
 Sewing materials: 100% Polyester
 Safety factor: 6:1,7:1,8:1
 Production standard: Chinese: JB/T8521, European:EN1492-1, USA:WSTDA, Australia:AS1353.,etc
 Use scope: Use scope: Mainly "one-way"lifting in the processing of cargo transportation



编号 Type Code	强度 W.L.L.	颜色 Webbing color	近似宽度(MM)Approximate width			最小长度 (M) Mini.Length	最大长度 (M) Max.Length
			6:1	7:1	8:1		
ES1-0100	1000KG		25/38	30/50	38/50	0.5	100
ES1-0200	2000KG		50	60	65	0.5	100
ES1-0300	3000KG		75	90	90	1	100
ES1-0400	4000KG		100	120	120	1	100
ES1-0500	5000KG		125	150	150	1	100
ES1-0600	6000KG		150	180	200	1	100
ES1-0800	8000KG		200	240	240	1	100
ES1-1000	10000KG		250	300	300	1	100
ES1-1200	12000KG		300	300	300	1	100

备注: 其他规格样式可按要求生产
 Note: Other specifications and styles can be produced on request

扁平环形吊装带-双层

Endless webbing sling double ply

织带材料: 100% 高强涤纶
 缝制材料: 100% 高强涤纶
 安全系数: 6: 1, 7: 1, 8: 1
 生产标准: 国标 JB/T8521, 欧标 EN1492-1, 美标 WSTDA 等, 澳洲标准: AS1353
 使用范围: 多为随货走的“一次性”吊装
 Webbing materials: 100% Polyester
 Sewing materials: 100% Polyester
 Safety factor: 6:1,7:1,8:1
 Production standard: Chinese: JB/T8521, European:EN1492-1, USA:WSTDA, Australia:AS1353.,etc
 Use scope: Use scope: Mainly "one-way"lifting in the processing of cargo transportation



编号 Type Code	强度 W.L.L.	颜色 Webbing color	近似宽度(MM)Approximate width			最小长度 (M) Mini.Length	最大长度 (M) Max.Length
			6:1	7:1	8:1		
ES2-0200	2000KG		25/38	30/50	38/50	0.5	100
ES2-0400	4000KG		50	60	65	0.5	100
ES2-0600	6000KG		75	90	90	0.5	100
ES2-0800	8000KG		100	120	120	1	100
ES2-1000	10000KG		125	150	150	1.5	100
ES2-1200	12000KG		150	180	200	1.5	100
ES2-1600	16000KG		180	240	240	1.5	100
ES2-2000	20000KG		200	300	300	1.5	100
ES2-2400	24000KG		300	300	300	1.5	100

备注: 其他规格样式可按要求生产
 Note: Other specifications and styles can be produced on request

圆筒吊装带 Round sling

圆筒吊装带特点

乐远圆筒吊装带是采用100%PES制成，内部承载芯采用无极环绕以构成循环状，100%PES织成不受力的套管对承载芯加以保护。吊装方式多样且吊装带受力均匀，从而使吊装带的工作寿命更长。可以适用于多种吊装条件下的物体起吊，它既有高强度，又能够不伤害物体表面，既轻便又柔软，可以多种组合的使用方式。圆筒吊装带外表精细，对易损物体不会造成损伤。而且吊装方式多，也可用于拖拉被吊物。

Character of the Round sling

LOUA round sling is made of 100% PES. The seamless internal core is surrounded by the polyester sleeve. 100% PES is woven into a stress-free sleeve to protect the load-bearing core. There are many lifting methods and the round sling is evenly stressed, which makes it have a longer working life. It can be used for lifting objects under a variety of lifting conditions. It has high strength, does not damage the surface of objects, is light and soft, and can be used in various combinations. The outer surface of the round sling is fine and will not hurt fragile cargos. There are many lifting methods, and it can also be used to tow cargos. peter.chu:



环形圆筒吊装带 Endless round sling

织带材料: 100% 高强涤纶
缝纫材料: 100% 高强涤纶

安全系数: 6: 1, 7: 1, 8: 1

生产标准: 国标 JB/T8521, 欧标 EN1492-2, 美标 WSTDA 等, 澳洲标准: AS4497

使用范围: 大多数吊装、连接场景都可适用

Webbing materials: 100% Polyester

Sewing materials: 100% Polyester

Safety factor: 6:1,7:1,8:1

Production standard: Production standard: Chinese: JB/T8521,

European: EN1492-2, USA:WSTDA, Australia:AS4497,etcAustralia:AS1353,etc

Use scope: For mostly all the cargo lifting and object connecting



编号 Type Code	强度 W.L.L.	颜色 Webbing color	近似厚度(MM) Approx. thickness	近似宽度(MM) Approx. width	最小长度 (M) Mini.Length	最大长度(M) Max.Length
RS1-0010	1000KG		6	40	0.5	100
RS1-0020	2000KG		7	50	0.5	100
RS1-0030	3000KG		8	60	0.5	100
RS1-0040	4000KG		9	70	0.5	100
RS1-0050	5000KG		11	75	0.5	100
RS1-0060	6000KG		12	80	1.0	100
RS1-0080	8000KG		13	90	1.0	100
RS1-0100	10000KG		15	100	2.0	100
RS1-0120	12000KG		16	110	2.0	100
RS1-0150	15000KG		18	125	2.0	100
RS1-0200	20000KG		20	150	2.5	100
RS1-0250	25000KG		24	180	2.5	100
RS1-0300	30000KG		32	200	2.5	100
RS1-0400	40000KG		40	200	2.5	100
RS1-0500	50000KG		45	220	2.5	100
RS1-0600	60000KG		65	240	4.0	100
RS1-0800	80000KG		70	260	4.0	100
RS1-1000	100000KG		80	290	4.0	100
RS1-1200	120000KG		90	310	4.0	100
RS1-1500	150000KG		100	360	5.0	100
RS1-2000	200000KG		120	450	5.0	100

备注:其他规格样式可按要求生产
Note: Other specifications and styles can be produced on request

双眼圆筒吊装带 Eye-Eye round sling



织带材料: 100% 高强涤纶

缝纫材料: 100% 高强涤纶

安全系数: 6: 1, 7: 1, 8: 1

生产标准: 国标 JB/T8521, 欧标 EN1492-2, 美标 WSTDA 等, 澳洲标准: AS4497

使用范围: 大多数吊装、连接场景都可适用

Webbing materials: 100% Polyester

Sewing materials: 100% Polyester

Safety factor: 6:1,7:1,8:1

Production standard: Production standard: Chinese: JB/T8521,

European: EN1492-2, USA:WSTDA, Australia:AS4497,etcAustralia:AS1353,etc

Use scope: For mostly all the cargo lifting and object connecting

编号 Type Code	强度 W.L.L.	颜色 Webbing color	近似厚度(MM) Approx. thickness	近似宽度(MM) Approx. width	最小长度 (M) Mini.Length	最大长度(M) Max.Length
ERS1-0010	1000KG		11	50	1.0	100
ERS1-0020	2000KG		12	60	1.5	100
ERS1-0030	3000KG		14	70	1.5	100
ERS1-0040	4000KG		15	80	1.5	100
ERS1-0050	5000KG		23	90	1.5	100
ERS1-0060	6000KG		25	90	2.0	100
ERS1-0080	8000KG		26	100	3.0	100
ERS1-0100	10000KG		27	110	3.0	100
ERS1-0120	12000KG		28	125	3.0	100
ERS1-0150	15000KG		29	150	3.0	100
ERS1-0200	20000KG		31	180	3.0	100
ERS1-0250	25000KG		34	200	4.0	100
ERS1-0300	30000KG		36	220	4.0	100
ERS1-0400	40000KG		40	250	4.0	100
ERS1-0500	50000KG		46	300	4.0	100

备注:其他规格样式可按要求生产
Note: Other specifications and styles can be produced on request

套筒类型 Sleeve types for round sling

可根据不同使用需求选择不同的圆筒套筒类型 (图片以2吨为例)
Many types of sleeve are available (take 2ton sleeve as an example)

单层 Plain weave	斜纹加厚 Twill weave and thick type	双层 Double ply sleeve
		

高分子芯圆筒吊装带 UHMWPE round sling



超高分子量聚乙烯 (UHMWPE) 纤维材料已被广泛应用于起重吊装领域, 得益于其超高强度且重量轻、耐磨损等特点, 主要被应用于对重型货物的吊装、连接等。另一方面, 由于其熔点较低, 所以对于芯材起保护作用的套筒及其他保护装置的制作也十分重要。

UHMWPE material and yarn has been widely used in the field of lifting and hoisting. Thanks to its ultra-high strength, light weight, and wear resistance, it is mainly used for lifting and connecting heavy-duty cargo and objects. On the other hand, due to its low melting point, the production of sleeves and other protective devices that protect the core material is also very important.

内芯材料: 100% 高分子
 套管材料: 100% 高强涤纶
 安全系数: 6: 1, 7: 1, 8: 1
 生产标准: 国标 JB/T8521, 欧标 EN1492-2, 美标 WSTDA 等, 澳洲标准: AS4497
 使用范围: 重型货物吊装、连接场景
 Core yarn materials: 100% UHMWPE
 Sewing materials: 100% polyester
 Safety factor: 6:1, 7:1, 8:1
 Production standard: Chinese: JB/T8521, European: EN1492-2, USA: WSTDA, Australia: AS4497, etc
 Use scope: Heavy duty lifting and for object connecting



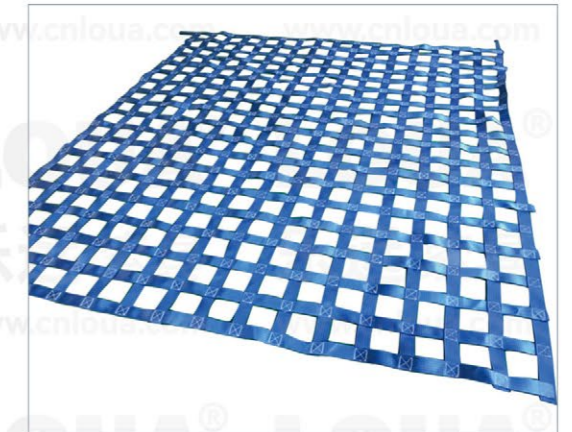
编号 Type Code	强度 W.L.L.	颜色 Webbing color	近似厚度(MM) Approx. thickness	近似宽度(MM) Approx. width	最小长度 (M) Mini.Length	最大长度 (M) Max.Length
UHRS-0050	5000KG		20	34	1.5	100
UHRS-0060	6000KG		22	35	2.0	100
UHRS-0080	8000KG		25	45	2.0	100
UHRS-0100	10000KG		30	50	3.0	100
UHRS-0120	12000KG		32	55	3.0	100
UHRS-0150	15000KG		35	65	3.0	100
UHRS-0200	20000KG		38	70	4.0	100
UHRS-0250	25000KG		40	75	4.0	100
UHRS-0300	30000KG		45	80	6.0	100
UHRS-0400	40000KG		45	95	6.0	100
UHRS-0500	50000KG		48	110	8.0	100
UHRS-0600	60000KG		60	125	8.0	100
UHRS-0800	80000KG		65	130	10.0	100
UHRS-1000	100000KG		72	150	15.0	100
UHRS-2000	200000KG		109	220	20.0	100
UHRS-3000	300000KG		151	250	25.0	100
UHRS-4000	400000KG		186	320	25.0	100

*备注: 可按要求生产环形或者双眼型
 Note: is able to be made to endless or eye-eye type

扁带网 Webbing cargo nets

扁带网是将织带根据不同应用场景制作成网状, 并配以相应的金属连接固定装置。一般按不同的用途可分为: 货物吊装网、货物固定网、安全防护网、高空防坠网、厢舱隔货网、攀爬训练网等。制作前请告诉我司应用场景、整体尺寸、强度需求、网眼尺寸、织带宽度、颜色或者连接件类型等相关需求明细, 我司根据要求为您提供方案和报价。

Flat webbing nets is made of webbing into a mesh shape according to different application scenarios, and equipped with corresponding metal connection and fixing devices. Generally, according to different uses, it has type of: cargo lifting net, cargo secure net, height safety protect net, cargo hatch barrier net, climbing net, etc. Before production, please tell us the application scenario, overall demensions, strength requirements, mesh size, webbing width, color or fitting type and other relevant requirements details. Our company will provide you with a plan and quotation according to your requirements.



编号 Type Code	破断强度 (KG) Breaking strength	尺寸最小 (M*M) Mini.Size	尺寸最大 (M*M) Max.Size	网格尺寸 (CM) Mesh size	织带宽度 (MM) webbing width	连接件 Fitting
CN050	500	1X1	20X20	10X10	25	按场景适配 To be chosen by the use application
CN100	1000	1X1	20X20	15X15	35	
CN150	1500	1X1	20X20	15X15	38	
CN200	2000	1X1	20X20	20X20	50	
CN250	2500	1X1	20X20	25X25	50	
CN300	3000	1X1	20X20	25X25	60	
CN400	4000	1X1	20X20	30X30	75	
CN500	5000	1X1	20X20	30X30	100	

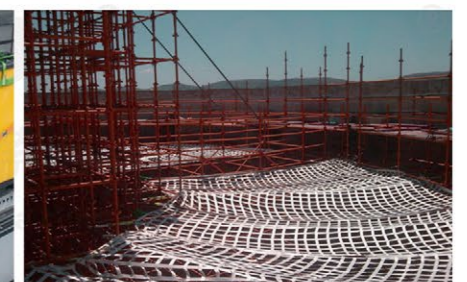
备注: 参数仅供参考, 规格样式可按要求生产
 Note: Above sheet is for the parts reference, the cargo nets is produced by order.



货物吊装网 Cargo lifting net



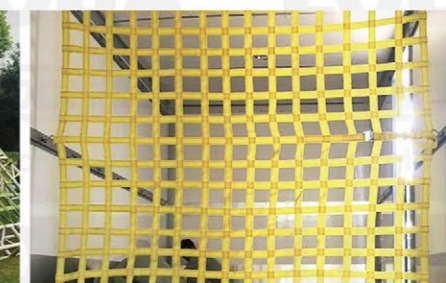
货物固定网 Cargo secure net



安全防护网 Height safety net



攀爬网 Climbing net



厢舱隔货网 Cargo barrier net



车顶行李固定网 Roof rack net

拖车带/绳

Towing straps & ropes

拖车带 / 绳系用于拖拽车辆，可分为带类和绳类。拖车带分为涤纶、尼龙材料，具有不同的延伸率。绳类分为尼龙、高分子纤维，重量更轻，强度更高。

Tow straps/ropes are used to tow vehicles and have strap types and rope types. Tow straps have polyester and nylon materials, with different elongation rates. Rope have nylon and polymer yarns, which is lighter and higher strength.



涤纶拖车带 PES towing strap



编号 Type Code	破断强度(KG) Breaking strength	宽度(MM) Width	层数 Layer	长度(M) Length	延伸率 Elongation	颜色 Webbing color	连接件 Fitting
TSP1-30	3500	30	1	3-30M	≤12%	按要求 On request	卸扣/钩等 Shackle, Hooks or others
TSP2-30	7000	30	2	3-30M	≤12%		
TSP1-50	6000	50	1	3-30M	≤12%		
TSP2-50	12000	50	2	3-30M	≤12%		
TSP1-60	7000	60	1	3-30M	≤12%		
TSP2-60	14000	60	2	3-30M	≤12%		
TSP1-75	8000	75	1	3-30M	≤12%		
TSP2-75	16000	75	2	3-30M	≤12%		
TSP1-90	10500	90	1	3-30M	≤12%		
TSP2-90	21000	90	2	3-30M	≤12%		

备注: 参数仅供参数, 规格样式可按要求生产
Note: Other specifications and styles can be produced on request

尼龙拖车带 Nylon recovery strap



编号 Type Code	破断强度(KG) Breaking strength	宽度(MM) Width	层数 Layer	长度(M) Length	延伸率 Elongation	颜色 Webbing color	连接件 Fitting
TSN1-56	6000	50	1	3-30米	≤20%	按要求 On request	卸扣/钩等 Shackle, Hooks or others
TSN1-68	8000	60	1	3-30米	≤20%		
TSN1-759	9000	75	1	3-30米	≤20%		
TSN1-751	11000	75	1	3-30米	≤20%		
TSN1-101	11000	100	1	3-30米	≤20%		
TSN1-105	15000	100	1	3-30米	≤20%		

备注: 参数仅供参数, 规格样式可按要求生产
Note: Other specifications and styles can be produced on request

尼龙拖车绳 Nylon towing ropes



编号 Type Code	破断强度(KG) Breaking strength	直径(MM) Dia meter	长度 Length	重量/米- 约KG/M Approx.	延伸率 Elongation	颜色 Webbing color	连接件 Fitting
KRR12	12000	22	6M/9M	0.35KG	≤30%	按要求 On request	疙瘩 绳 Soft shackle
KRR15	15000	26	6M/9M	0.43KG	≤30%		
KRR21	21000	30	6M/9M	0.62KG	≤30%		

备注: 参数仅供参数, 规格样式可按要求生产
Note: Other specifications and styles can be produced on request

高分子拖车绳 UHMWPE towing ropes



编号 Type Code	破断强度(KG) Breaking strength	直径(MM) Dia meter	长度 Length	重量/米- 约KG/M Approx.	延伸率 Elongation	颜色 Webbing color	连接件 Fitting
UHR12	12000	12	6M/9M/15M	0.13	≤5%	按要求 On request	疙瘩绳 Soft shackle
UHR15	15000	14	6M/9M/15M	0.16	≤5%		
UHR20	20000	16	6M/9M/15M	0.22	≤5%		
备注: 参数仅供参数, 规格样式可按要求生产 Note: Other specifications and styles can be produced on request							

拖车带/绳 配件 Spare parts for towing strap/rope

金属卸扣 Metal shackle	拖钩 Towing hook	疙瘩绳(软卸扣) Soft shackle	滑轮 Pulley	收纳包 Package bag

运动走扁带

Slackline

走扁带也有叫走绳, 英文名 Slackline, 即行走于固定在两点之间的扁带之上, 保持身体平衡, 甚至完成各种技巧动作的新运动。Slackline 一般使用 50mm 宽的扁带, 它可以作为攀岩者的训练项目, 用来提高攀登平衡技术和专注力, 是一项独立的极具挑战的平衡运动, 也是深受儿童青少年的一项户外休闲体育运动。

Slackline is a new movement of walking on a flat belt fixed between two points to maintain body balance and even complete various technical movements. Slackline generally uses a 50mm wide flat belt. It can be used as a training program for rock climbers to improve climbing balance skills and concentration. It is also developed to Ninja line an independent and challenging balance sport and is also an outdoor leisure activity popular among children and teenagers.



织带材料: 100% 高强涤纶
金属材料: 高碳钢
缝纫材料: 100% 高强涤纶
安全系数: 2: 1
生产标准: 欧标 EN12195-2 等
Webbing materials: 100% Polyester
Metal materials: High Carbon steel
Sewing materials: 100% polyester
Safety factor: 2:1
Production standard: Production standard: EN12195-2

编号 Type Code	破断强度 (KG) Breaking strength	宽度 (MM) Width	长度 (M) Length		织带颜色 Webbing color	印制 LOGO Printing
			固定端 Fix Side	可调长端 Long side		
TOP10	1000	25	2	10-100	按要求 On request	单色/多色 Single-multi color
SL15	1500	28	2	10-100		
SL20	2000	50	2	10-100		
SL30	3000	50	2	10-100		
SL40	4000	50	2	10-100		

可适配棘轮 Alternative ratchet buckle

25mm彩锌 25mm ratchet used for top line	28mm包胶柄 28mm ratchet	50mm经典长柄 50mm Classic long handle	高精密长柄 Long handle precise	50mm加长柄 Extra long handle

必要配件 Accessories for slackline

收纳袋 Packbag	树垫 Tree wear	棘轮包布 Ratchet protector	定做纸盒 Customized carton	连接带连接扣 Connecting buckle strap	添加游乐设备(网、爬梯、秋千等) Add other equipment (climbing net, ladder, swing, etc)

高空安全系列

Height Safety

高安个人防坠装备包含安全衣 (safety harness)、安全腰带、防坠挂带 (landyard)、和水平式挂绳, 扁平的合成纤维带设计, 即使在悬挂状态下也不会让高空作业者产生不适感。我们的织带采用 100% 高强涤纶材料, 稳定性强, 耐老化, 轻量化金属扣件, 不但方便调整大小尺寸, 整体轻便, 极易穿着并且安全舒适。

Personal height safety series includes safety harness, safety belt, landyard, and web temporary horizontal lifeline. The flat webbing belt design will not cause any discomfort to height workers even when suspended. Our webbing is made of 100% high-strength polyester material, which is highly stable, resistant to aging, and has lightweight metal fasteners. It is not only easy to adjust the size, but also lightweight, easy to wear, safe and comfortable.



全身式安全衣 Full body safety harness



- ▶ 可缝制多个连接点和调节扣
- ▶ 100% 高强涤纶材料
- ▶ 多种尺寸
- ▶ 可搭配多种颜色
- ▶ 可添加舒适护垫
- ▶ 整体轻便
- ▶ Able to sew multiple connection points and adjustment buckles
- ▶ 100% high-strength polyester material
- ▶ Various sizes
- ▶ Able to be matched with various colors
- ▶ Comfortable pads can be added
- ▶ Overall lightweight

安全腰带 Safety waist belt



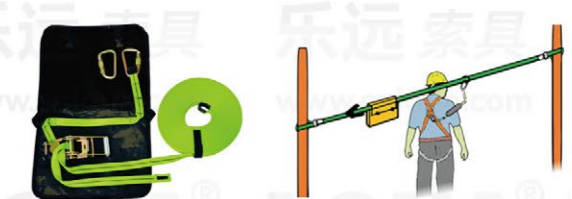
- ▶ 可缝制多个连接点和调节扣
- ▶ 100% 高强涤纶材料
- ▶ 多种尺寸
- ▶ 可添加舒适护垫
- ▶ 可预装安全绳
- ▶ Able to sew multiple connection points and adjustment buckles
- ▶ 100% high-strength polyester material
- ▶ Various sizes
- ▶ Comfortable pads can be added
- ▶ Safety rope can be pre-installed

安全绳 Landyarn



- ▶ 可选圆绳或者扁带型
- ▶ 可选固定长度或者带减震装置
- ▶ 100% 高强涤纶材料
- ▶ 多种安全钩及连接扣可选
- ▶ 多种颜色可选
- ▶ Optional round rope or flat belt type
- ▶ Optional fixed length or with shock absorber
- ▶ 100% high-strength polyester material
- ▶ A variety of safety hooks and connecting buckles are available
- ▶ Able to be matched with various colors

水平式挂带 Web horizontal temporary lifeline



- ▶ 可选圆绳或者扁带型
- ▶ 可选固定长度或者带减震装置
- ▶ 100% 高强涤纶材料
- ▶ 多种安全钩及连接扣可选
- ▶ 多种颜色可选
- ▶ Optional round rope or flat belt type
- ▶ Optional fixed length or with shock absorber
- ▶ 100% high-strength polyester material
- ▶ A variety of safety hooks and connecting buckles are available
- ▶ Able to be matched with various colors

军用系列

Military series

我们为部队及警察系统提供高品质的货物捆绑、吊装产品，包含军绿色、迷彩系列捆绑带、吊装带及货物网等。织带采用涤纶、尼龙等材料，具有强度高、耐老化、轻量化、样式全、功能多等特点，欢迎咨询我们！

We provide high-quality cargo lashing and lifting products for the military and police systems, including military green and camouflage series lashing straps, lifting straps and cargo nets, etc. The webbing is able to be made of polyester, nylon and other materials. It has the characteristics of high strength, aging resistance, lightweight, full range of styles and multiple functions. Welcome to contact us!



军用货物捆绑带 Military Cargo lashing straps

产品结构	编号	宽度MM	工作强度KG	破断强度KG	长度	织带颜色
Product layout	Type Code	Width	Working strength	Breaking Strength	Length	Webbing Color
两头式 2parts type	MDR25	25	500	1000	定制 On requested	迷彩/军绿 CAMO/MILITARY
	MDR28	28	750	1500		
	MDR38	38	1000	2000		
	MDR503	50	1500	3000		
	MDR505	50	2500	5000		
MDR75	75	5000	10000			
环形 Endless type	MER25	25	1000	2000		
	MER28	28	1500	3000		
	MER38	38	2000	4000		
	MER503	50	3000	6000		
	MER505	50	5000	10000		
MDR75	75	10000	20000			

*规格样式可按要求生产 Note: Other specifications and styles can be produced on request
*金属配件选择请参照捆绑带页 Note: Alternative hardware please refer to the ratchet lashing pages.

军用起重吊装带 Military Cargo lifting straps

编号 Type Code	强度 W.L.L.	颜色 Webbing color	近似宽度(MM) Approximate width			最小长度 (M) Mini.Length	最大长度 (M) Max.Length
			6:1	7:1	8:1		
MWS2-0100	1000KG	军绿/MILITARY	30	30	50	0.9	100
MWS2-0200	2000KG		50	60	65	1.0	100
MWS2-0300	3000KG		75	90	90	1.1	100
MWS2-0400	4000KG		100	120	120	1.3	100
MWS2-0500	5000KG		125	150	150	1.5	100
MWS2-0600	6000KG		150	180	200	1.6	100
MWS2-0800	8000KG		200	240	240	2.0	100
MWS2-1000	10000KG		250	300	300	2.2	100
MWS2-1200	12000KG		300	300	300	2.2	100

*其他规格样式可按要求生产
Note: Other specifications and styles can be produced on request

军用货物起重网 / 固定网 Military cargo nets



备注：具体类型请参考织带网（第23页），按要求定做
Note: Please refer to the webbing net (page 23), customized as required.

织带保护装置 Webbing protector

尖锐棱角刮伤以及强力的摩擦产生高温都会对织带或绳索性能造成损耗甚至完全破坏，因此在实际操作过程中需要对吊带、捆绑带或者绳索进行一定程度的保护，由我司开发设计了多种保护材料，请联系我们选择相应的种类！

Cuts at sharp edges and high temperatures caused by strong friction will cause loss or even complete damage to the performance of the webbing or rope. Therefore, during actual operation, it is necessary to protect the sling, webbing or rope to a certain extent. Our company has developed and designed many kinds of protective materials, please contact us to choose the corresponding type!



织带套管 (空心带) Webbing sleeve



- ▶ 可移动
- ▶ 可与织带绳索缝成一体
- ▶ 宽度 30mm-300mm
- ▶ Removeable
- ▶ Able to be sewn with webbing
- ▶ Width 30mm to 300mm

PVC 套管 PVC sleeve



- ▶ 可移动
- ▶ 可与织带绳索缝成一体
- ▶ 宽度 30mm-300mm
- ▶ Removeable
- ▶ Able to be sewn with webbing
- ▶ Width 30mm to 300mm

魔术贴织带套管 Velcro tape webbing sleeve



- ▶ 可移动
- ▶ 可从织带绳索任意位置拆装
- ▶ 更耐磨
- ▶ 宽度 200mm-1000mm
- ▶ Removeable
- ▶ Able to install or uninstall from any position of the sling
- ▶ More wear-resistant
- ▶ Width 200mm to 300mm

魔术贴 PVC 套管 Velcro tape PVC sleeve



- ▶ 可移动
- ▶ 可从织带绳索任意位置拆装
- ▶ 更耐磨
- ▶ 宽度 200mm-1000mm
- ▶ Removeable
- ▶ Able to install or uninstall from any position of the sling
- ▶ More wear-resistant
- ▶ Width 200mm to 300mm

聚氨酯涂层 Polyurethane coating



- ▶ 附着于织带绳索不会脱落
- ▶ 软性材质可弯曲
- ▶ 非常耐磨耐刺
- ▶ 不受尺寸限制
- ▶ Will not fall off from the webbing or rope
- ▶ Soft material can be bent
- ▶ Very wear-resistant and cut-resistant
- ▶ No size restrictions

塑料护角 (只适用于捆绑带) Plastic corner protector



- ▶ 可移动
- ▶ 可从绳索任意位置拆装
- ▶ 宽度 38mm-100mm
- ▶ 可选样式多
- ▶ Removeable
- ▶ Able to install or uninstall from any position
- ▶ Width 38mm to 100mm
- ▶ various types

橡胶护角 Rubber corner protector



- ▶ 可移动
- ▶ 柔软，可贴合任意形状表面
- ▶ 宽度 50mm-100mm
- ▶ Removeable
- ▶ Flexible, easy to fit any shape
- ▶ Width 50mm to 100mm

双层空心护角 2layer hard plastic protector



- ▶ 双层中空塑料
- ▶ 接近 90 度角
- ▶ 边长可选
- ▶ 110x110mm, 170x170mm, 190x190mm
- ▶ 可根据需要裁剪长度
- ▶ 2layer empty hard plastic
- ▶ 90 degree, right angle
- ▶ Alternative size: 110x110mm, 170x170mm, 190x190mm
- ▶ Cut length in need on request

铁板护角 Steel corner protector

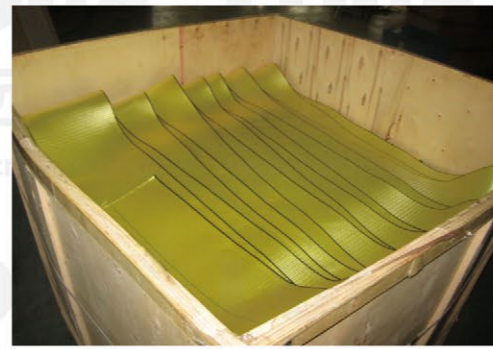


- ▶ 铁板制成
- ▶ 宽度 50mm
- ▶ Made of steel
- ▶ Width 50mm

捆绑带织带 Webbing for lashing

材料: 100% 高强涤纶
生产标准: 欧标 EN12195-2, 美标 WSTDA 等
宽度范围: 25mm-100mm
包装方式: 盘带 / 散装

Webbing materials: 100% Polyester
Production standard: EN12195-2, WSTDA, etc
Width: 25mm to 100mm
Package: 100/roll or bulk pack



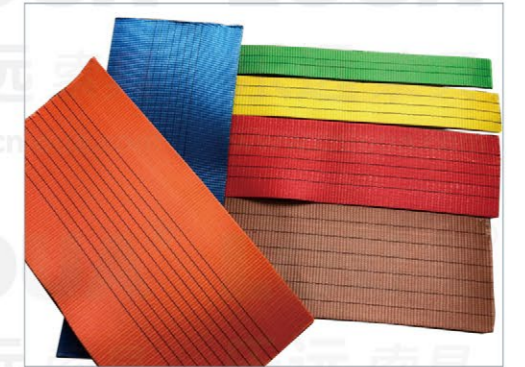
编号 Type Code	宽度MM Width	破断强度KG Breaking Strength	颜色样式 Color & style	印字 Over print
ST25-01	25	1000	可指定 On request	可印 Able to print
ST25-02	25	1250	可指定 On request	可印 Able to print
ST25-03	25	1500	可指定 On request	可印 Able to print
ST28-01	28	2250	可指定 On request	可印 Able to print
ST28-02	28	3300	可指定 On request	可印 Able to print
ST28-03	28	4000	可指定 On request	可印 Able to print
ST32-01	32	3300	可指定 On request	可印 Able to print
ST35-01	35	2500	可指定 On request	可印 Able to print
ST35-02	35	3000	可指定 On request	可印 Able to print
ST35-03	35	4500	可指定 On request	可印 Able to print
ST38-01	38	3000	可指定 On request	可印 Able to print
ST38-02	38	4000	可指定 On request	可印 Able to print
ST38-03	38	6000	可指定 On request	可印 Able to print
ST50-01	50	2500	可指定 On request	可印 Able to print
ST50-02	50	3750	可指定 On request	可印 Able to print
ST50-03	50	4500	可指定 On request	可印 Able to print
ST50-04	50	5000	可指定 On request	可印 Able to print
ST50-05	50	6250	可指定 On request	可印 Able to print
ST50-06	50	7500	可指定 On request	可印 Able to print
ST75-01	75	10500	可指定 On request	可印 Able to print
ST75-02	75	12500	可指定 On request	可印 Able to print
ST75-03	75	16000	可指定 On request	可印 Able to print
ST100-01	100	9600	可指定 On request	可印 Able to print
ST100-02	100	12500	可指定 On request	可印 Able to print
ST100-03	100	15000	可指定 On request	可印 Able to print

*本表格破断强度系为净带破断强度(缝前)
*其他规格样式可按要求生产
*美标宽度INCH, 强度单位为LBS, 按美国及其他英制单位地区标准生产
Note: the breaking strength is before Sewing
Note: Other specifications and styles can be produced on request
Note: The American standard width unit is INCH, the length is FT, and the strength unit is LBS. It is produced according to the standards of the United States and other regions.

吊装带织带 Webbing for sling

材料: 100% 高强涤纶
安全系数: 6:1,7:1,8:1
生产标准: 国标 JB/T8521, 欧标 EN1492-1, 北美 / 南美, 澳洲标准: AS1353
宽度范围: 25mm-350mm
包装方式: 盘带 / 散装

Webbing materials: 100% Polyester
Production standard: Chinese: JB/T8521, European:EN1492-1, USA: WSTDA, Australia:AS1353, etc
Width: 25mm-350mm
Package: 100/roll or bulk pack



编号 Type Code	宽度MM Width	安全系数 Safety factor	破断强度KG Breaking Strength	标注颜色 Standard color	印字 Over print
SW1T-6	25/38	6:1	3750		可印 Able to print
SW1T-7	30/50	7:1	4500		可印 Able to print
SW1T-8	38/50	8:1	5000		可印 Able to print
SW2T-6	50	6:1	7500		可印 Able to print
SW2T-7	60	7:1	9000		可印 Able to print
SW2T-8	60	8:1	10000		可印 Able to print
SW3T-6	75	6:1	11250		可印 Able to print
SW3T-7	90	7:1	13500		可印 Able to print
SW3T-8	90	8:1	15000		可印 Able to print
SW4T-6	100	6:1	15000		可印 Able to print
SW4T-7	120	7:1	18000		可印 Able to print
SW4T-8	120	8:1	20000		可印 Able to print
SW5T-6	125	6:1	18750		可印 Able to print
SW5T-7	150	7:1	22500		可印 Able to print
SW5T-8	150	8:1	25000		可印 Able to print
SW6T-6	150	6:1	22500		可印 Able to print
SW6T-7	180	7:1	27000		可印 Able to print
SW6T-8	180	8:1	30000		可印 Able to print
SW8T-6	200	6:1	30000		可印 Able to print
SW8T-7	240	7:1	36000		可印 Able to print
SW8T-8	240	8:1	40000		可印 Able to print
SW10T-6	250	6:1	37500		可印 Able to print
SW10T-7	300	7:1	45000		可印 Able to print
SW10T-8	300	8:1	50000		可印 Able to print
SW12T-6	300	6:1	45000		可印 Able to print
SW12T-7	300	7:1	54000		可印 Able to print

*其他规格样式可按要求生产
*美标宽度INCH, 强度单位为LBS, 按美国及其他英制单位地区标准生产
Note: Other specifications and styles can be produced on request
Note: The American standard width unit is INCH, the length is FT, and the strength unit is LBS. It is produced according to the standards of the United States and other regions.

棘轮收紧器 Ratchet buckle

宽度:25MM-28MM Width:25MM-28MM						
编号	特征名称	图片	破断强度KG	宽度mm	长度mm	单重约KG
Type Code	Feature Name	Picture	Breaking strength	Width	Length	Approx.weight
RB25-01	25mm彩锌 25mm standard		1000	25	115	0.2
RB25-02	1吨包胶黑 25mm with rubber handle		1000	25	120	0.22
RB25-03	1吨宽把手 25mm wide handle		1000	25	120	0.24
RB25-04	1吨不锈钢 25mm stainless		1000	25	115	0.25
RB28-01	1.5吨直柄 1.5ton straight handle		1500	28	125	0.35
RB28-02	1.5吨宽把手 1.5ton with wide handle		1500	28	125	0.35
RB28-03	1.5吨圆铁柄 1.5ton with steel handle		1500	28	130	0.4
RB28-04	1.5吨包胶柄 1.5ton with rubber handle		1500	28	130	0.45
RB28-05	1.5吨不锈钢 1.5ton stainless		1500	28	130	0.4

棘轮收紧器 Ratchet buckle


宽度:32-38MM Width:32MM-38MM						
编号	特征名称	图片	破断强度KG	宽度mm	长度mm	单重约KG
Type Code	Feature Name	Picture	Breaking strength	Width	Length	Approx.weight
RB32-01	1.5吨PLUS 1.5ton plus		1500	32	150	0.5
RB35-01	2吨铁柄 2ton standard		2000	38	135	0.45
RB35-02	2吨包胶黑 2ton rubber handl		2000	38	155	0.5
RB35-03	2吨不锈钢 2ton stainless		2000	38	135	0.44
RB38-01	3吨塑柄 3ton standard		3000	38	155	0.6
RB38-02	3吨直柄 3ton straight handle		3000	38	155	0.6
RB38-03	3吨长柄 3ton long handle		3000	38	200	0.7
RB38-04	3吨不锈钢 3ton stainless		3000	38	155	0.6

*备注: 收紧器把手类型及表面处理方式有多种选择, 具体请按需求咨询我们。
Note: There are many types of buckles and surface treatment, please contact us for the details or if you haven't found what you need.

棘轮收紧器 Ratchet buckle

宽度:50MM Width:50MM						
编号	特征名称	图片	破断强度KG	宽度mm	长度mm	单重约KG
Type Code	Feature Name	Picture	Breaking strength	Width	Length	Approx.weight
RB50-01	2吨轻型 Light duty 2ton		2000	50	135	0.5
RB50-02	2吨不锈钢 2ton stainless		2000	50	135	0.5
RB50-03	高精密长柄 Long handle precise		5000	50	230	0.98
RB50-04	经典长柄 Classic long handle		5000	50	230	0.92
RB50-05	5吨中柄 Medium Arm Handle		5000	50	196	0.8
RB50-06	5吨短直柄 short straight handle		5000	50	170	0.8
RB50-07	5吨加长柄 Extra long handle		5000	50	300	1.1
RB50-08	5吨倒齿 Ergo ratchet		5000	50	330	1.2
RB50-09	重型6吨 Double Safety Lock 6ton		6000	50	220	1.1
RB50-10	六角头型 wrench driver(no handle)		5000	50	145	0.6
RB50-12	收紧器带钩 Ratchet with installed fitting		5000	50	230	1.1
RB50-13	固定式紧带器 Bolt winch		5000	50	160	1.5
RB50-14	5吨不锈钢 5ton stainless		5000	50	230	0.92

棘轮收紧器 Ratchet buckle

宽度:75-100MM Width:75-100MM						
编号	特征名称	图片	破断强度KG	宽度mm	长度mm	单重约KG
Type Code	Feature Name	Picture	Breaking strength	Width	Length	Approx.weight
RB75-01	标准 Standard 75mm 10ton ratchet		10000	75	320	3.5
RB75-02	短柄 Short handle 75mm 10ton ratchet		10000	75	250	3
RB100-01	标准 Standard 100mm 10ton ratchet		10000	100	320	4

*收紧器把手类型及表面处理方式有多种选择, 具体请按需求咨询我们。
Note: There are many types of buckles and surface treatment, please contact us for the details or if you haven't found what you need.

压扣 Cambuckle

宽度:25MM-50MM Width:25MM-50MM						
编号	特征名称	图片	破断强度KG	宽度mm	长度mm	单重约KG
Type Code	Feature Name	Picture	Breaking strength	Width	Length	Approx.weight
CB25-01	25mm-250KG		250	25	44	0.03
CB25-02	25mm两头 25mm 2sides		250	25	60	0.05
CB25-03	25mm-400KG		400	25	50	0.04
CB25-04	25mm-600KG		600	28	64	0.06
CB35-01	35mm-600KG		600	35	60	0.09
CB35-02	35mm-900KG		900	35	60	0.12
CB35-03	38mm圆形 38mm round rack		1100	38	74	0.2
CB50-01	50mm-900KG		900	50	76	0.2
CB50-02	50mm圆形 50mm round rack		1100	50	74	0.3
CB50-03	50mm-1500KG		1500	50	76	0.3
CB25-05	250KG不锈钢 250KG stainless		250	25	44	0.03

反转扣 Over center buckle

宽度:25MM-50MM Width:25MM-50MM						
编号	特征名称	图片	破断强度KG	宽度mm	长度mm	单重约KG
Type Code	Feature Name	Picture	Breaking strength	Width	Length	Approx.weight
OB25-01	25mm-600KG		600	25	70	0.1
OB25-02	25mm-800KG		800	25	93	0.15
OB25-03	25mm-1500KG		1500	25	141	0.2
OB28-01	28mm-1500KG		1500	28	160	0.2
OB28-02	28mm-2000KG		2000	28	180	0.3
OB45-01	45mm-2000KG		2000	45	140	0.3
OB45-02	45mm-2300KG		2300	45	165	0.5
OB50-01	50mm-400kg		400	50	85	0.2
OB50-02	50mm-750kg		750	50	180	0.3
OB50-03	50mm-2000kg		2000	50	140	0.4
OB25-04	25mm不锈钢 25mm stainless		100	25	70	0.1
OB50-04	50mm不锈钢 50mm stainless		1100	50	160	0.3

*备注: 收紧器类型及表面处理方式有多种选择, 具体请按需求咨询我们。
Note: There are many types of buckles and surface treatment, please contact us for the details or if you haven't found what you need.

连接件 End fittings

宽度:25MM-28MM Width:25MM-28MM						
编号	特征名称	图片	破断强度KG	宽度mm	长度mm	单重约KG
Type Code	Feature Name	Picture	Breaking strength	Width	Length	Approx.weight
H25-01	25mm双排钩 25mm double J hook		800	25	50	0.03
H25-02	25mm单排钩 25mm single J hook		800	25	65	0.03
H25-03	25mm扭钩 25mm twisted double J hook		800	25	110	0.05
H25-04	S钩 S hook		800/1500	环眼φ24 Eyeφ24	105	0.08
H25-05	S钩带锁 S hook with latch		800/1500	环眼φ24 Eyeφ24	105	0.09
H28-01	28mm-双排钩 28mm double J hook		1500	28	55	0.05
H28-02	28mm-板钩 28mm flat hook		1500	28	55	0.05
H28-03	28mm-板钩带锁 28mm flat hook with latch		1500	28	55	0.06
H28-04	28mm-平板钩 28mm flat hook with latch		1500	28	95	0.12
H28-05	28mm-平板扭钩 28mm twisted flat hook with latch		1500	28	110	0.15
H28-06	28mm-锚板 28mm anchor point		1100	28	51	0.08

连接件 End fittings

宽度:25MM-28MM Width:25MM-28MM						
编号	特征名称	图片	破断强度KG	宽度mm	长度mm	单重约KG
Type Code	Feature Name	Picture	Breaking strength	Width	Length	Approx.weight
H28-07	锻造钩 Forged snap hook		2500	环眼φ18 Eye φ18	90	0.16
H28-08	轨道连接扣 Stud fitting for track		1800	环眼φ29 Eye φ29	60	0.05
H28-09	虾钩1.5吨 1.5ton snap hook		1500	28	95	0.05
H28-10	虾钩2吨 2ton snap hook		2000	28	95	0.05
H25-06	1吨不锈钢 1ton stainless J hook		1000	25	50	0.03
H28-11	1.5吨不锈钢 1.5ton stainless J hook		1500	28	55	0.05

*连接件类型及表面处理方式有多种选择,具体请按需求咨询我们。
Note:There are many types of fittings and surface treatment,please contact us for the details or if you haven't found what you need.

连接件

End fittings

宽度:35MM-38MM Width:35MM-38MM						
编号	特征名称	图片	破断强度KG	宽度mm	长度mm	单重约KG
Type Code	Feature Name	Picture	Breaking strength	Width	Length	Approx.weight
H35-38-01	双排钩 Double J hook		2000/3000	35/38	65	0.16
H35-38-02	双排钩带锁 Double J hook with latch		2000/3000	35/38	70	0.19
H35-38-03	单排钩 Single J hook		2000/3000	35/38	70	0.22
H35-38-04	三角环 Delta ring		2000/3000	35/38	75	0.18
H35-38-05	D形环 D ring		2000/3000	35/38	75	0.18
H35-38-06	锻造钩带环 Triangle snap hook		2000/3000	35/38	118	0.25
H35-38-07	轨道连接扣 Stud fitting for Track		2000/3000	环眼φ39 Eye φ39	100	0.2
H35-38-08	平板钩带锁 Flat hook with latch		2000/3000	35/38	110	0.2
H35-38-09	平板扭钩带锁 Twisted flat hook with latch		2000/3000	35/38	130	0.25
H35-38-10	旋转钩 Swivel hook		2000/3000	35/38	100	0.26
H35-38-11	单排钩带套管 Single J hook with tube		2000/3000	35/38	100	0.25
H35-38-12	丁字钩带套管 J hook with tube		2000/3000	35/38	100	0.24
H35-38-13	爪钩 Claw hook		2000/3000	35/38	100	0.21
H35-38-14	不锈钢 Stainless hook		2000/3000	35/38	100	0.21

*连接件类型及表面处理方式有多种选择,具体请按需咨询我们。
Note:There are many types of fittings and surface treatment,please contact us for the details or if you haven't found what you need.

连接件

End fittings

宽度:50MM Width: 50MM						
编号	特征名称	图片	破断强度KG	宽度mm	长度mm	单重约KG
Type Code	Feature Name	Picture	Breaking strength	Width	Length	Approx.weight
H50-01	双排钩 Double J hook		5000	50	71	0.23
H50-02	双排钩带锁 Double J hook with latch		5000	50	105	0.33
H50-03	爪钩 Claw hook		5000	50	70	0.22
H50-04	单排钩 Single J hook		5000	50	70	0.4
H50-05	D形环 D ring		5000	50	70	0.5
H50-06	三角环 Delta ring		5000	50	70	0.22
H50-07	圆环 Circular ring		5000	φ50		0.25
H50-08	三角环锻造钩 Triangle forged hook		5000	50	170	0.55
H50-09	板钩带锁 Flat hook with latch		5000	50	155	0.35
H50-10	扭钩带锁 Twisted flat hook with latch		5000	50	155	0.35
H50-11	E形扣 E fitting		2000	50		0.11
H50-12	外档旋转钩 Swivel hook		5000	50	105	0.5
H50-13	锚板 Anchor plate		5000	50	90	0.2
H50-14	澳式天鹅钩 C/W swan hook+keeper		5000	50	90	0.4

*连接件类型及表面处理方式有多种选择,具体请按需咨询我们。
Note:There are many types of fittings and surface treatment,please contact us for the details or if you haven't found what you need.

连接件 End fittings

宽度:50MM Width: 50MM						
编号	特征名称	图片	破断强度KG	宽度mm	长度mm	单重约KG
Type Code	Feature Name	Picture	Breaking strength	Width	Length	Approx.weight
H50-15	美式板钩 US flat hook		5000	50	90	0.4
H50-16	板钩 Flat hook		5000	50	90	0.4
H50-17	鸚鵡嘴鉤 Snap hook		2200	50	62	0.35
H50-18	鴨舌鉤 Flat snap hook with tube		5000	50	110	0.3
H50-19	內檔旋轉鉤 Swivel hook for ratchet		5000	50	110	0.35
H50-20	單排鉤帶套管 Single J hook with tube		5000	50	96	0.35
H50-21	丁字鉤帶套管 J hook with tube		5000	50	110	0.3
H50-22	轉換鉤帶套管 Conversion snap hook		5000	50	130	0.3
CDH50	雙排鉤帶橫杆 J hook no sewn		5000	50	135	0.5
CDB50	目字扣 Cord buckle		5000	50	102	0.5
H50-23	雙排鉤不銹鋼 Stainless J hook		5000	50	71	0.23

*连接件类型及表面处理方式有多种选择,具体请按需咨询我们。
Note:There are many types of fittings and surface treatment,please contact us for the details or if you haven't found what you need.

连接件 End fittings

宽度:75-100MM Width:75-100MM						
编号	特征名称	图片	破断强度KG	宽度mm	长度mm	单重约KG
Type Code	Feature Name	Picture	Breaking strength	Width	Length	Approx.weight
H75-100-01	雙排鉤 Double J hook		10000	100/75	130	0.9
H75-100-02	U形鉤 Claw hook		10000	100/75	130	0.9
H75-03	天鵝鉤 C/W swan hook+keeper		10000	75	105	0.7
H75-04	可拆卸D形環 D ring with threads		20000	75	150	1.2
H75-05	可拆卸D形環+貨櫃鉤 D ring with eye hook		20000	75	300	2.2
H75-06	三角環貨鉤 Triangle hook		10000	75	2440	1.7
H100-08	美式三角鍛環 US forged delta ring		9000	100	110	1.5
H75-100-09	美式板鉤 US flat hook		8000	100/75	97	0.9
H75-10	直角板鉤 Right angle flat hook		8000	75	97	0.9
H100-11	美式鏈條鉤 US chain hooks		8000	1000	380	2.5
H100-12	象腳 Elephant foot		20000	75	150	1.2
H100-13	旋轉鉤Forged swivel hook		20000	75	200	3.2

*连接件类型及表面处理方式有多种选择,具体请按需咨询我们。
Note:There are many types of fittings and surface treatment,please contact us for the details or if you haven't found what you need.